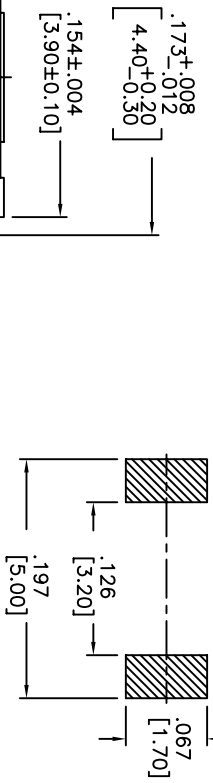
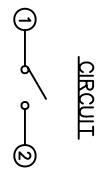
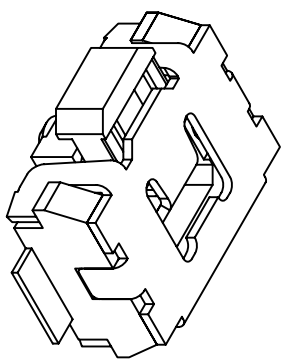
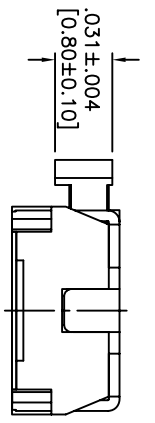
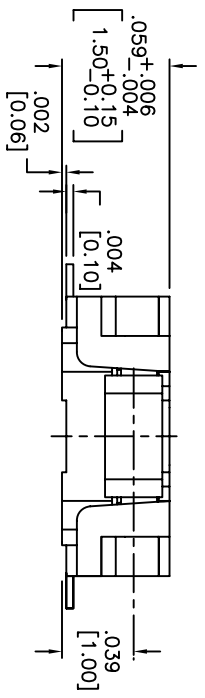
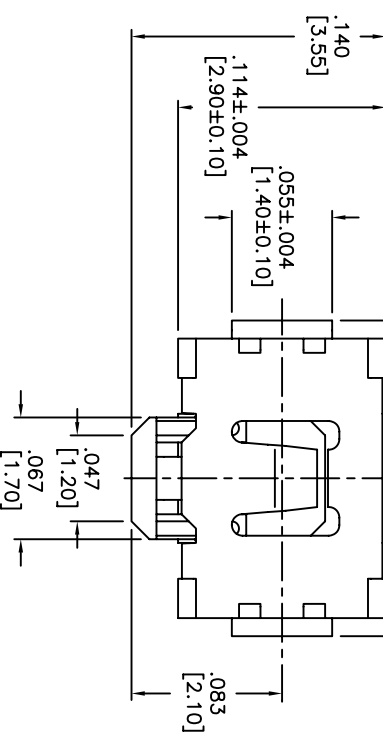


THIS DOCUMENT IS THE PROPERTY OF APDM COMPONENTS AND SHALL NOT BE COPIED, REPRODUCED, DISCLOSED OR USED AS THE BASIS FOR MANUFACTURING OR SALE WITHOUT PERMISSION OF A DULY AUTHORIZED REPRESENTATIVE OF APDM COMPONENTS INC.



HATCHED AREA SHOWS SOLDERING LAND
P.C.B. LAYOUT
UNLESS OTHERWISE SPECIFIED
ALL P.C. TOLERANCES ARE ±.002 [0.05]



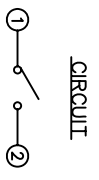
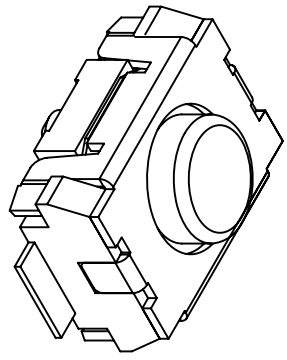
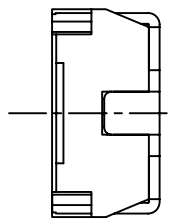
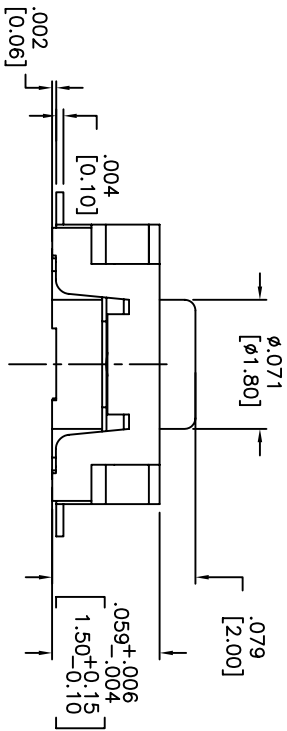
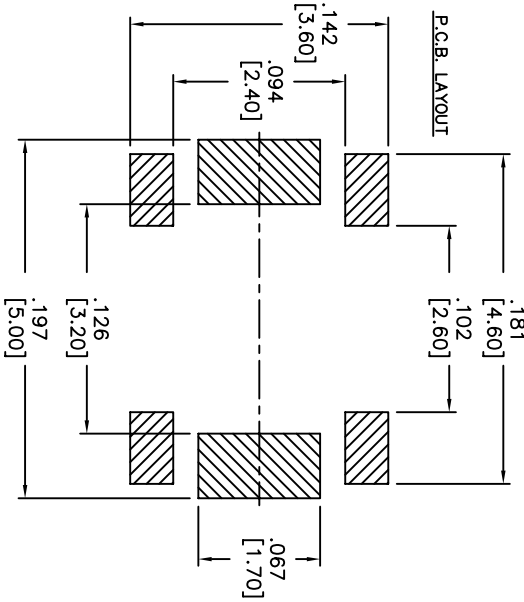
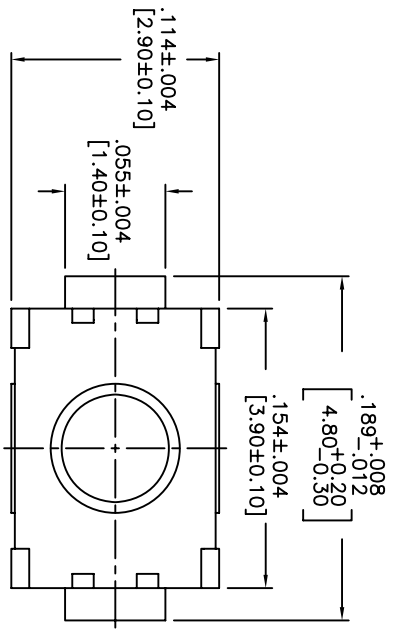
DATE	SYM	REVISION RECORD	DWN.	CK.
5/08	A	ECO# 778	CD	PD

DESCRIPTION: SIDE PUSH MECHANICAL CONTACT SWITCH.
SPECIFICATIONS:
OPERATION FORCE: 220± 65gf
STROKE: 0.2±0.08mm
OPERATION TEMP.: -25°C TO +70°C.
STORAGE TEMP.: -30°C TO +80°C.
ELECTRICAL LIFE: 100,000 CYCLES.
RATING: 50mA, 12VDC.
CONTACT RESISTANCE: 100mΩ MAX.
INSULATION RESISTANCE: 100MΩ MIN. AT 100VDC.
DIELECTRIC STRENGTH: 100VAC/1 MINUTE.
CONTACT ARRANGEMENT: 1 POLE 1 THROW.
VIBRATION TEST: PASSED METHOD 201A
MIL-STD-202F.
SHOCK TEST: 50G PER METHOD 213B CONDITION A OF MIL-STD-202F
MATERIALS:
COVER: STAINLESS STEEL
BASE: LCP HIGH-TEMP. THERMOPLASTIC.
COLOR, WHITE.
STEM: LCP HIGH-TEMP. THERMOPLASTIC.
COLOR, BLACK.
CONTACT DISK: STAINLESS STEEL WITH SILVER CLADDING
TERMINAL: BRASS WITH SILVER PLATING
PACKAGING: TAPE AND REEL (3,500 PIECES PER REEL)
ROHS COMPLIANT
LEAD FREE SOLDERING COMPATIBLE
HAND SOLDERING: 320°c MAX WITH 30 WATT IRON FOR 2 SECONDS
IR REFLOW: 260°C MAX

CUSTOMER PART NO.: 263262

<p>DESIGNER'S INITIALS DIMENSION</p>		<p>DATE 7/31/06</p>	
<p>TOLERANCES (UNLESS OTHERWISE SPECIFIED) .XX±.XX [0.05] .XXX±.XXX [0.20] .XXXX±.XXXX [0.02] ANGLE = 40.5°</p>		<p>DRAWING NO. AMPTFVTR</p>	
<p>APDM APDM COMPONENTS INC. 10000 W. 110th Ave. Denver, CO 80231 Phone: 303-772-3534 Fax: 303-772-3534</p>		<p>REV A</p>	
<p>9A. INSPECT</p>		<p>DRM. CJD</p>	
<p>TITLE TACT SWITCH</p>		<p>THIRD ANGLE PROJECTION</p>	
<p>SHEET 1 OF 1</p>		<p>SCALE 15:1</p>	
<p>SIZE B</p>		<p>PKT. PJD</p>	
<p>INCH</p>		<p>BR.</p>	
<p>DESIGNER'S INITIALS</p>		<p>BR.</p>	

THIS DOCUMENT IS THE PROPERTY OF APEN COMPONENTS AND SHALL NOT BE COPIED, REPRODUCED, DISCLOSED OR USED AS THE BASIS FOR MANUFACTURING OR SALE WITHOUT PERMISSION OF A DULY AUTHORIZED REPRESENTATIVE OF APEN COMPONENTS INC.

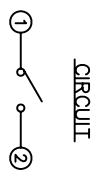
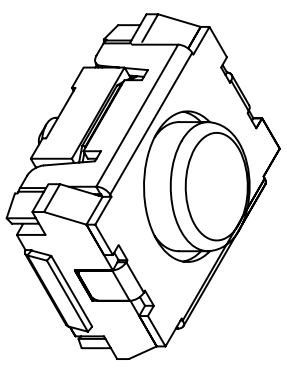
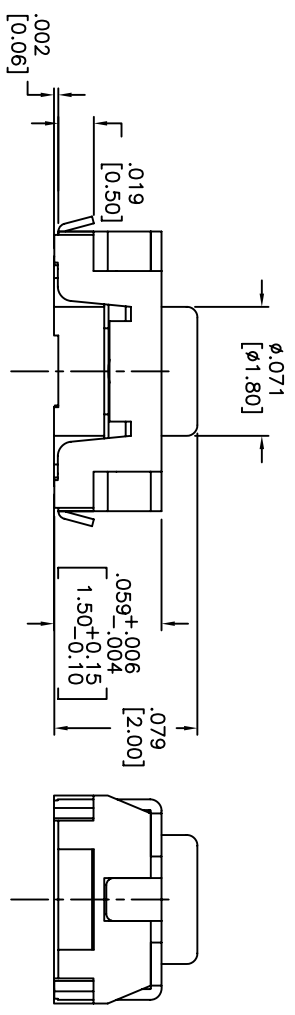
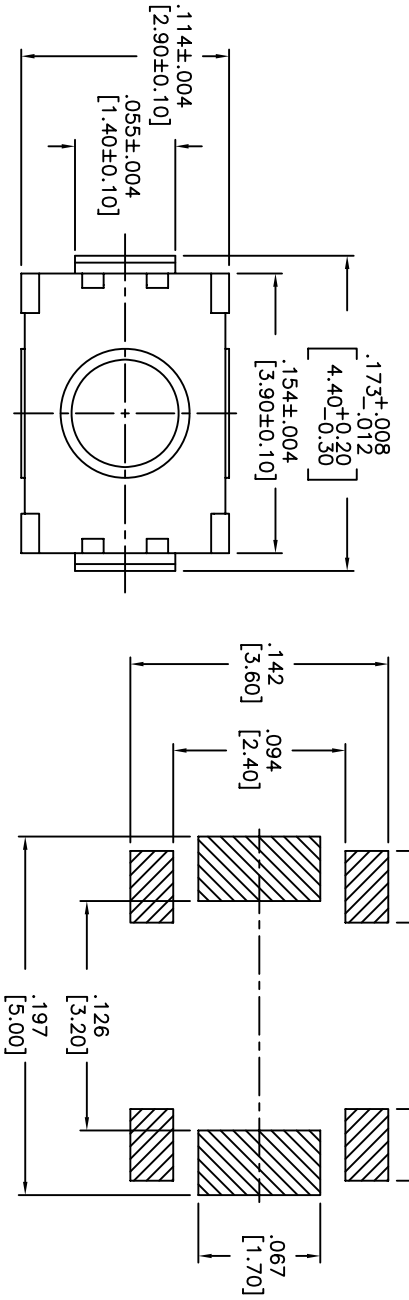


DATE	SYM	REVISION RECORD	DWN.	CK.
5/08	B	ECO# 778	CD	PD

DESCRIPTION: VERTICAL PUSH MECHANICAL CONTACT SWITCH.
 SPECIFICATIONS:
 OPERATION FORCE: 160±50gf
 OPERATION TEMP.: -25°C TO +70°C.
 STORAGE TEMP.: -30°C TO +80°C.
 ELECTRICAL LIFE: 100,000 CYCLES.
 RATING: 50ma, 12VDC.
 VIBRATION RESISTANCE: PASSES METHOD 201A MIL-STD-202F
 MIL-STD-202F SHOCK RESISTANCE: 50G PER METHOD 213B MIL-STD-202F
 CONTACT RESISTANCE: 100mΩ MAX.
 INSULATION RESISTANCE: 100MΩ MIN. AT 100VDC.
 DIELECTRIC STRENGTH: 100VAC/1 MINUTE.
 CONTACT ARRANGEMENT: 1 POLE 1 THROW.
 MATERIALS:
 COVER: STAINLESS STEEL
 BASE: LCP HIGH-TEMP. THERMOPLASTIC.
 COLOR, WHITE.
 STEM: LCP HIGH-TEMP. THERMOPLASTIC.
 COLOR, BLACK
 CONTACT DISK: STAINLESS STEEL WITH SILVER CLADDING
 TERMINAL: BRASS WITH SILVER PLATING
 TAPE: TEFLON.
 TAPE & REEL PACKAGING, 2,000 PER REEL
 SOLDERING:
 HAND SOLDERING: 30 WATT IRON AT 320°C FOR 2 SECONDS
 IR REFLOW: 240°C MAX
 ROHS COMPLIANT

0A. INSPECT: DESIGNATES CRITICAL DIMENSION		63 Neck Rd. 01835 North Attleboro, MA Phone: 508-372-5554		DRN. CJD BR:
TOLERANCES (unless as noted) .XX±=±.02(0.5) .XXX±=±.008(0.20) .XXXX±=±.0008(0.02) ANGLE = 30.5°		SHEET 1 OF 1 SIZE B SCALE 15:1	THIRD ANGLE PROJECTION 	PJD
TITLE VERTICAL PUSH TACT SWITCH		DATE 2/4/08	DRAWING NO. AMPPTFGP2VTR	REV B

THIS DOCUMENT IS THE PROPERTY OF APDM COMPONENTS AND SHALL NOT BE COPIED, REPRODUCED, DISCLOSED OR SALE WITHOUT PERMISSION OF A DULY AUTHORIZED REPRESENTATIVE OF APDM COMPONENTS INC.



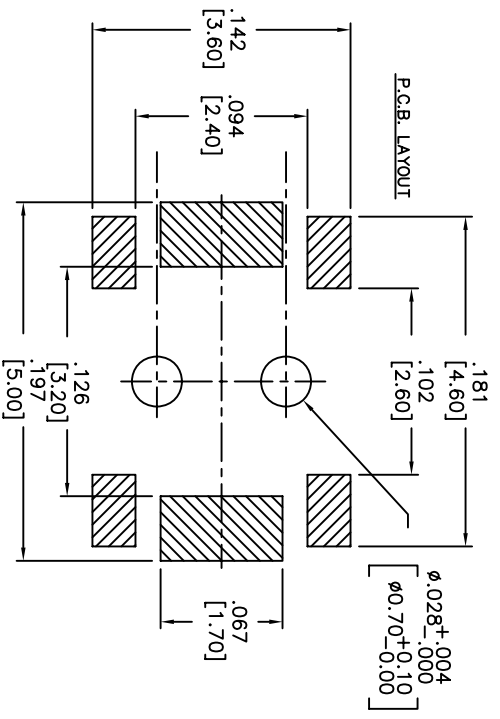
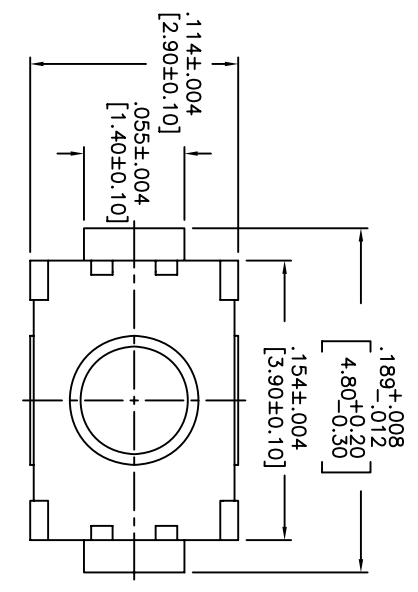
DATE	SYM	REVISION RECORD	DWNL	CK
5/08	B	ECO# 778	CD	PD

DESCRIPTION: VERTICAL PUSH MECHANICAL CONTACT SWITCH.
 SPECIFICATIONS:
 OPERATION FORCE: 160± 50gf
 OPERATION TEMP.: -25°C TO +70°C.
 STORAGE TEMP.: -30°C TO +80°C.
 ELECTRICAL LIFE: 100,000 CYCLES.
 RATING: 50mA, 12VDC.
 VIBRATION RESISTANCE: PASSES METHOD 201A MIL-STD-202F
 SHOCK RESISTANCE: 50G PER METHOD 213B MIL-STD-202F
 CONTACT RESISTANCE: 100mΩ MAX.
 INSULATION RESISTANCE: 100MΩ MIN. AT 100VDC.
 DIELECTRIC STRENGTH: 100VAC/1 MINUTE.
 CONTACT ARRANGEMENT: 1 POLE 1 THROW.
 MATERIALS:
 COVER: STAINLESS STEEL
 BASE: LCP HIGH-TEMP. THERMOPLASTIC.
 COLOR, WHITE.
 STEM: LCP HIGH-TEMP. THERMOPLASTIC.
 COLOR, BLACK.
 CONTACT DISK: STAINLESS STEEL
 WITH SILVER CLADDING
 TERMINAL: BRASS WITH SILVER PLATING
 TAPE: TEFLON.
 TAPE & REEL PACKAGING, 2,000 PER REEL
 SOLDERING:
 HAND SOLDERING: 30 WATT IRON AT 320°C FOR 2 SECONDS
 IR REFLOW: 240°C MAX
 ROHS COMPLIANT

0A. INSECT:		63 Neck Rd. 01835 Haverhill, MA Tel: 978-372-5554 Fax: 978-372-5554		PRN: CJD BR:
DESIGNER'S CRITICAL DIMENSION				PJD
TOLERANCES (UNLESS OTHERWISE SPECIFIED) .XX = ±.02(0.5) .XXX = ±.008(0.20) .XXXX = ±.0008(0.02) ANGLE = 40.5°		INCH SHEET SIZE SCALE THIRD ANGLE PROJECTION	1 OF 1 B 15:1	
TITLE VERTICAL PUSH TACT SWITCH		DATE: 2/4/08 DRAWING NO: AMPTLGP2VTR REV: B		

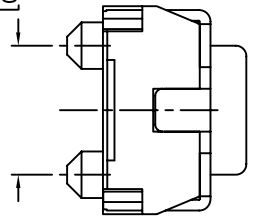
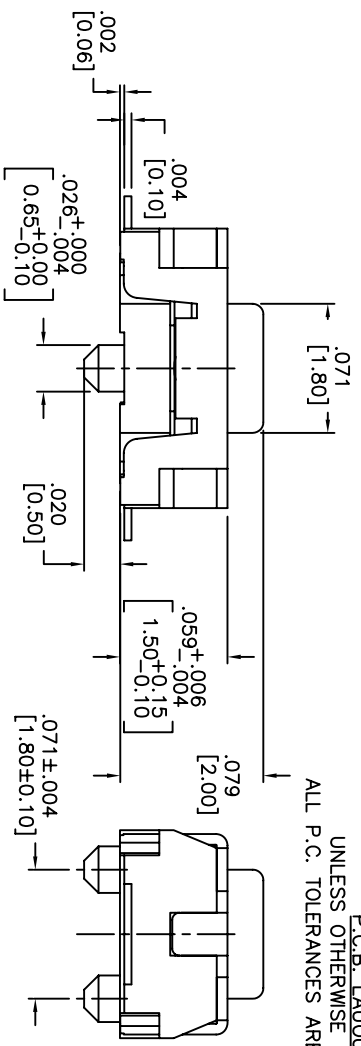
1 2 3 4 5 6 7 8

THIS DOCUMENT IS THE PROPERTY OF APDM COMPONENTS AND SHALL NOT BE COPIED, REPRODUCED, DISCLOSED OR USED AS THE BASIS FOR MANUFACTURING OR SALE WITHOUT PERMISSION OF A DULY AUTHORIZED REPRESENTATIVE OF APDM COMPONENTS INC.

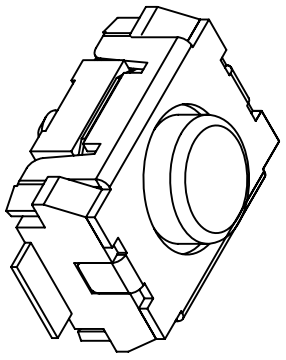


HATCHED AREA SHOWS SOLDERING LAND

P.C.B. LAYOUT
UNLESS OTHERWISE SPECIFIED
ALL P.C. TOLERANCES ARE ±.002 [0.50]



CIRCUIT



DATE	SYM	REVISION RECORD	DWN.	CK.
5/08	B	ECO# 778	CD	PD

DESCRIPTION: VERTICAL PUSH MECHANICAL CONTACT SWITCH.

SPECIFICATIONS:

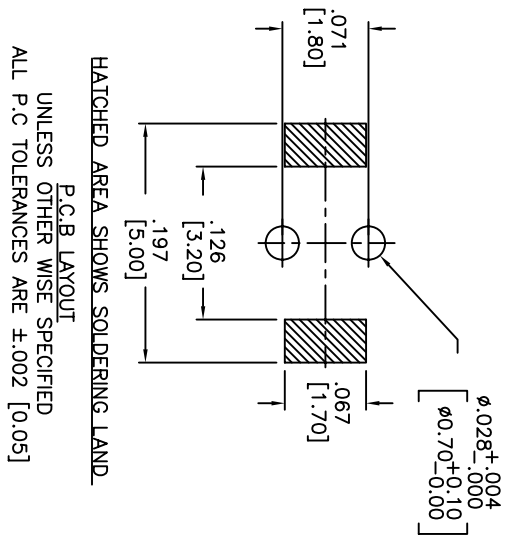
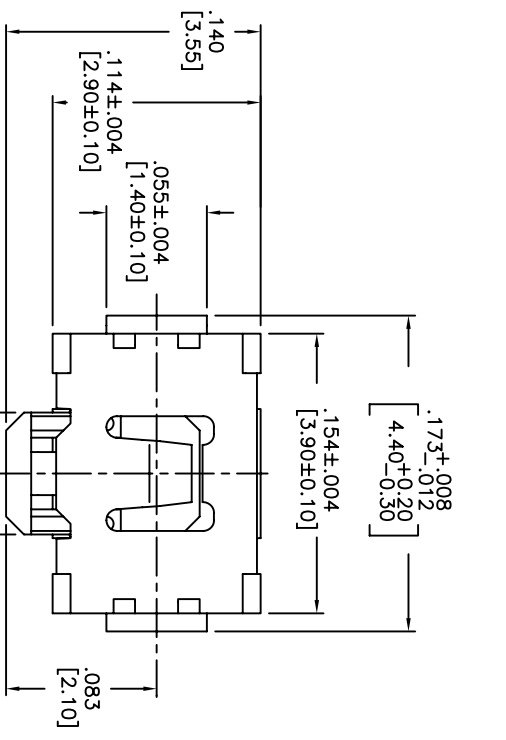
OPERATION FORCE: 160± 50gf
 OPERATION TEMP.: -25°C TO +70°C.
 STORAGE TEMP.: -30°C TO +80°C.
 ELECTRICAL LIFE: 200,000 CYCLES.
 RATING: 50ma, 12VDC.
 VIBRATION RESISTANCE: PASSES METHOD 201A
 MIL-STD-202F
 SHOCK RESISTANCE: 50G PER METHOD 213B
 MIL-STD-202F
 CONTACT RESISTANCE: 100mΩ MAX.
 INSULATION RESISTANCE: 100MΩ MIN. AT 100VDC.
 DIELECTRIC STRENGTH: 100VAC/1 MINUTE.
 CONTACT ARRANGEMENT: 1 POLE 1 THROW.
 TRAVEL: .005 +.002 [0.13 +0.05]

MATERIALS:

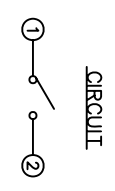
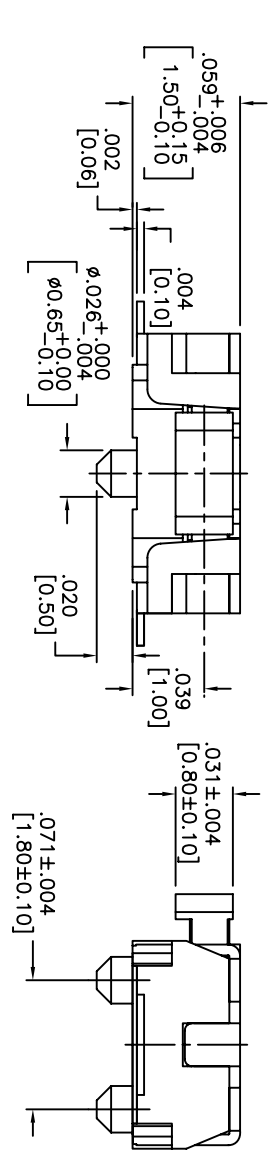
COVER: STAINLESS STEEL
 BASE: LCP HIGH-TEMP. THERMOPLASTIC.
 COLOR, WHITE.
 STEM: LCP HIGH-TEMP. THERMOPLASTIC.
 COLOR, BLACK.
 CONTACT DISK: STAINLESS STEEL WITH SILVER CLADDING
 TERMINAL: BRASS WITH SILVER PLATING
 TAPE: TEFLON.
 TAPE & REEL PACKAGING: 2,000 PER REEL
 SOLDERING:
 HAND SOLDERING: 30 WATT IRON AT 320°C FOR 2 SECONDS
 IR REFLOW: 240°C MAX
 ROHS COMPLIANT

<p>Q.A. INSPECT: DESIGNER: CRITICAL DIMENSION TOLERANCES (except as noted) .X0=±.02[0.5] .X00=±.008[0.20] .X000=±.0008[0.02] ANGLE = 30.5°</p>	<p>APDM APDM COMPONENTS INC. 10000 WILLOW CREEK BLVD. FREMONT, CA 94538 TEL: 925-772-3534 FAX: 925-772-3534</p>	<p>63 Neck Rd. 01835 Tel: 508-372-3534</p>	<p>DRN. CJD BR. PJD OK. PJD</p>
<p>DO NOT SCALE</p>	<p>DATE: 6/30/05</p>	<p>DRAWING NO. AMPTCFGP2VTR</p>	<p>REV. B</p>
<p>TITLE: TACT SWITCH</p>	<p>SHEET: 1 OF 1</p>	<p>SIZE: B</p>	<p>SCALE: 15:1</p>
<p>THIRD ANGLE PROJECTION</p>	<p></p>	<p></p>	<p></p>

THIS DOCUMENT IS THE PROPERTY OF APEM COMPONENTS AND SHALL NOT BE COPIED, REPRODUCED, DISCLOSED OR SALE WITHOUT PERMISSION OF A DULY AUTHORIZED REPRESENTATIVE OF APEM COMPONENTS INC.



HATCHED AREA SHOWS SOLDERING LAND
 P.C.B. LAYOUT
 UNLESS OTHER WISE SPECIFIED
 ALL P.C. TOLERANCES ARE ±.002 [0.05]

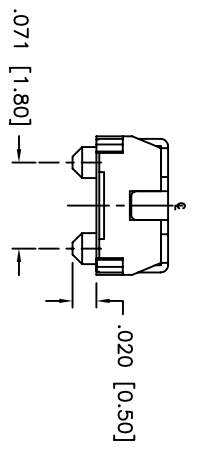
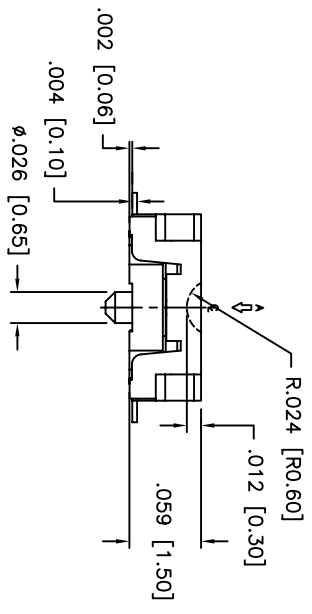
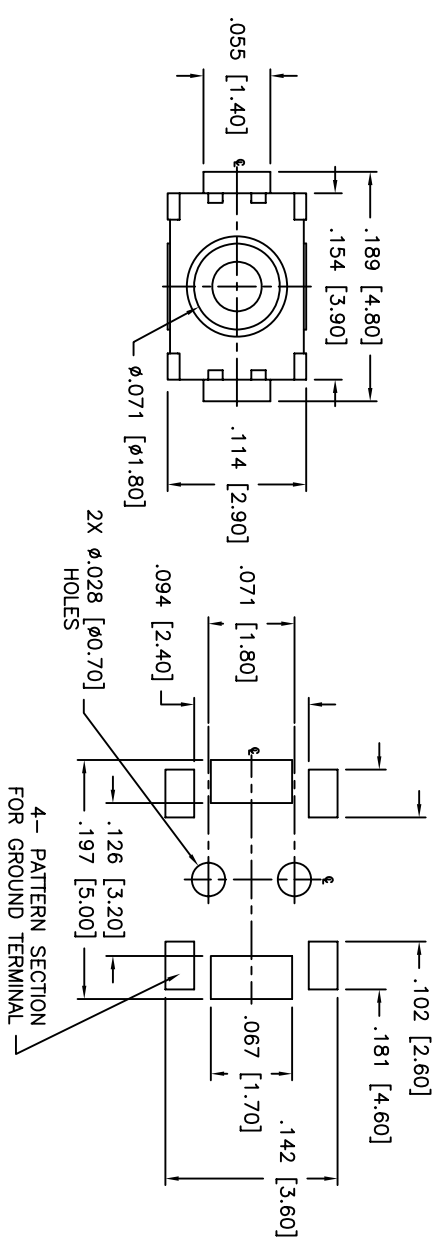


DESCRIPTION: SIDE PUSH MECHANICAL CONTACT SWITCH.
 SPECIFICATIONS:
 OPERATION FORCE: 220± 65gf
 STROKE: 0.2±0.10mm
 OPERATION TEMP.: -25°C TO +70°C.
 STORAGE TEMP.: -30°C TO +80°C.
 ELECTRICAL LIFE: 100,000 CYCLES.
 RATING: 50mA, 12VDC.
 CONTACT RESISTANCE: 100mΩ MAX.
 INSULATION RESISTANCE: 100MΩ MIN. AT 100VDC.
 DIELECTRIC STRENGTH: 100VAC/1 MINUTE.
 CONTACT ARRANGEMENT: 1 POLE 1 THROW.
 VIBRATION TEST: PASSED METHOD 201A
 MIL-STD-202F.
 SHOCK TEST: 50G PER METHOD 213B CONDITION A OF MIL-STD-202F
 MATERIALS:
 COVER: STAINLESS STEEL
 BASE: LCP HIGH-TEMP. THERMOPLASTIC.
 COLOR, WHITE.
 STEM: LCP HIGH-TEMP. THERMOPLASTIC.
 COLOR, BLACK.
 CONTACT DISK: STAINLESS STEEL
 WITH SILVER CLADDING
 TERMINAL: BRASS WITH SILVER PLATING
 PACKAGING: TAPE AND REEL
 (3,500 PEICES PER REEL)
 ROHS COMPLIANT
 LEAD FREE SOLDERING COMPATIBLE
 HAND SOLDERING: 320°C MAX WITH 30 WATT IRON
 FOR 2 SECONDS
 IR REFLOW: 260°C MAX

DATE	SYM	REVISION RECORD	DWN.	CK.
5/08	B	ECO# 778	CD	PD

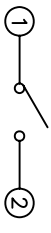
Q.A. INSPECT 		DESIGNER'S INITIAL DIMENSION		DRN. CJD BR.	
TOLERANCES (UNLESS AS NOTED) .XX±.YY(Z) [0.5] .XXX±.YYY [0.20] .XXXX±.YYYY [0.02] ANGLE = 30.5°		APEM 63 Neck Rd. Hawthorne, NJ 07835 Phone: 973-772-5554 Fax: 973-772-5554		OR. PJD THIRD ANGLE PROJECTION 	
TITLE TACT SWITCH		SHEET 1 OF 1 SIZE B SCALE 15:1		DRAWING NO. AMPTCFVTR REV B	
DATE 5/2/06 DO NOT SCALE					

THIS DOCUMENT IS THE PROPERTY OF APDM COMPONENTS AND SHALL NOT BE COPIED, REPRODUCED, DISCLOSED OR USED AS THE BASIS FOR MANUFACTURING OR SALE WITHOUT PERMISSION OF A DULY AUTHORIZED REPRESENTATIVE OF APDM COMPONENTS INC.



UNLESS OTHERWISE SPECIFIED
P.C. TOLERANCES ARE ±.002 [0.05]

P.C. LAYOUT



SCHEMATIC

DATE	SYM	REVISION RECORD	DWN.	CK.
1/06	A	ECO # 526	CD	PD
5/08	B	ECO# 778	CD	PD

DESCRIPTION: SPST, NORMALLY OPEN, MOMENTARY, SURFACE MOUNT TACT SWITCH WITH LOCATING PINS

SPECIFICATIONS:
CONTACT RATING: 50mA @ 12VDC
INITIAL CONTACT RESISTANCE: 100MOHMS MAX.
INSULATION RESISTANCE: 100MOHMS MIN. @ 500VDC
DIELECTRIC STRENGTH: 100VAC FOR 1 MINUTE
ELECTRICAL LIFE: 200,000 CYCLES MIN.
OPERATING TEMPERATURE RANGE: -25°C to +70°C
STOP STRENGTH: MAX 3kgf VERTICAL STATIC LOAD
CONT. FOR 15 SEC.

ACTUATION FORCE: 160± 50gf
STORAGE TEMPERATURE RANGE: -30°C TO +80°C
SHOCK RESISTANCE: 50G PER METHOD 213B, MIL-STD-202F
VIBRATION RESISTANCE: PASSES METHOD 201A, MIL-STD-202F
SOLDERING:
IR REFLOW: 240°C MAX.
HAND SOLDERING: 350°C MAX. FOR 3 SECONDS MAX.
(30 WATT IRON MAX.)

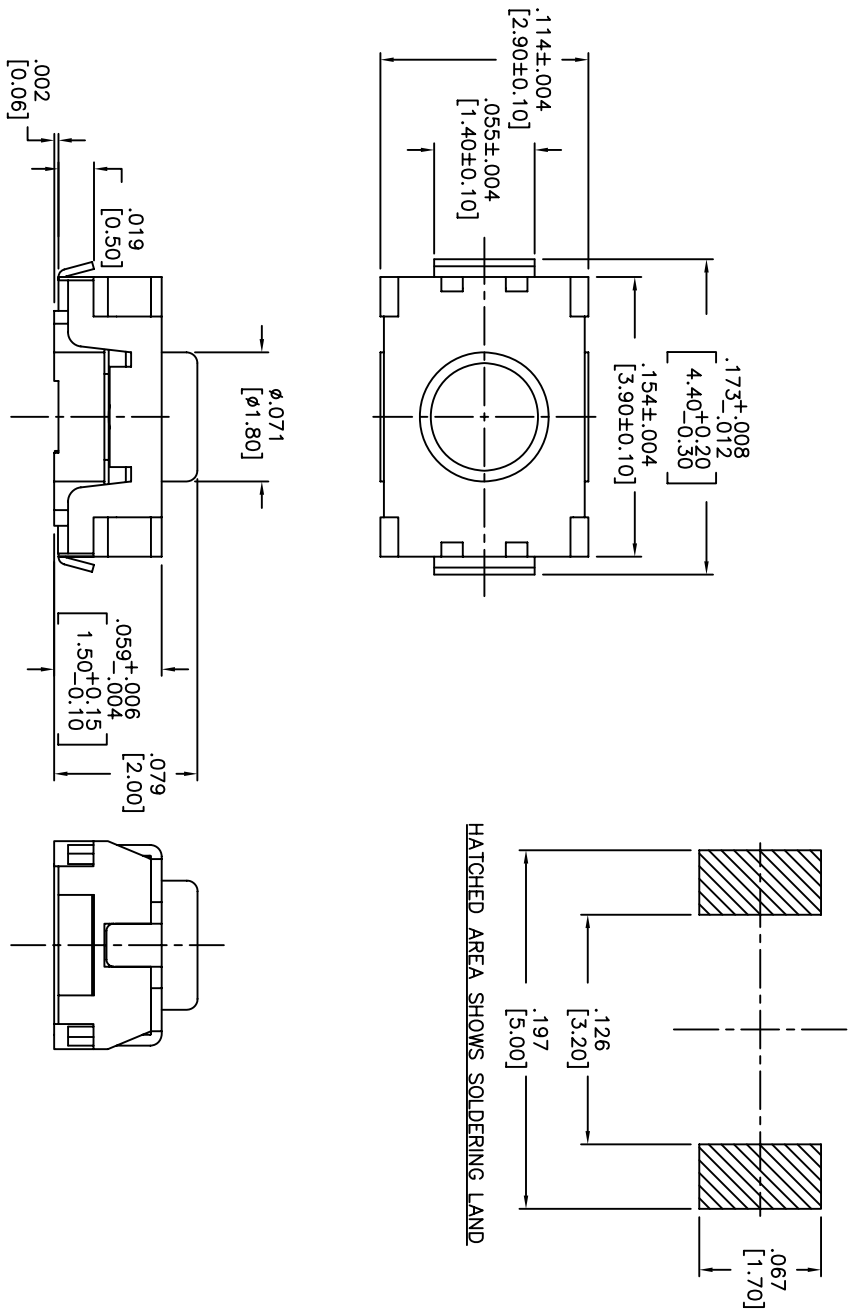
MATERIALS:
BASE: LCP HIGH-TEMP THERMOPLASTIC UL94V-0
ACTUATOR: LCP HIGH-TEMP THERMOPLASTIC UL94V-0
COVER: STAINLESS STEEL
TERMINALS: SILVER PLATED BRASS
SHORTING CONTACT: STAINLESS STEEL WITH SILVER CLADDING
TAPE: TEFLON
ROHS COMPLIANT

NOTE:
1. AFTER SOLDERING, RETURN SWITCHES TO NORMAL TEMPERATURE BEFORE WASHING.

DESIGNER'S INITIAL	APDM	63 Neck Rd. Haverhill, MA 01830 Tel: 978-375-5554 Fax: 978-375-5554	DRN. CJD
TOLERANCES (UNLESS AS NOTED) .XX = ±.02 [0.5] .XXX = ±.008 [0.20] .XXXX = ±.0008 [0.02] ANGLE = 40.5°	SHEET 1 OF 1	SIZE B	SCALE 10:1
TITLE TACT SWITCH WITH LOCATING PINS	DATE 07/20/05	DRAWING NO. AMPTCFG1VTR	REV B

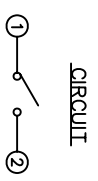
THIS DOCUMENT IS THE PROPERTY OF APDM COMPONENTS AND SHALL NOT BE COPIED, REPRODUCED, DISCLOSED OR USED AS THE BASIS FOR MANUFACTURING OR SALE WITHOUT PERMISSION OF A DULY AUTHORIZED REPRESENTATIVE OF APDM COMPONENTS INC.

P.C.B. LAYOUT



DATE	SYM	REVISION RECORD	DWN.	CK.
1/06	A	ECO# 526	CD	PD
5/08	B	ECO# 778	CD	PD

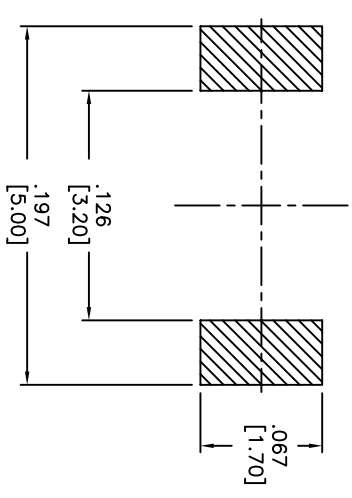
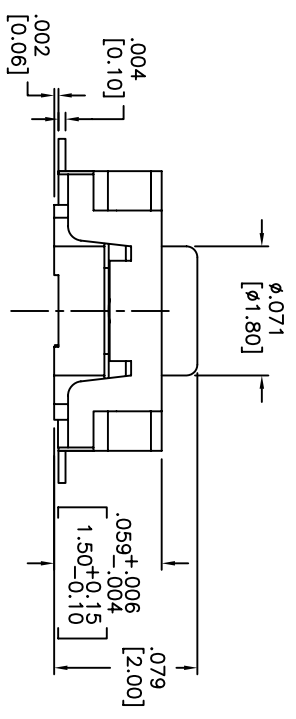
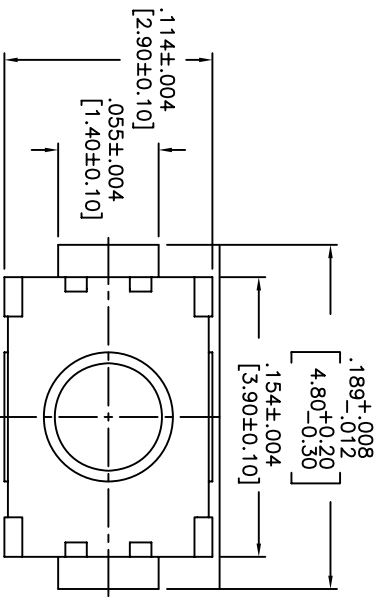
DESCRIPTION: VERTICAL PUSH MECHANICAL CONTACT SWITCH.
 SPECIFICATIONS:
 OPERATION FORCE: 220 ± 65gf
 OPERATION TEMP.: -25°C TO +70°C.
 STORAGE TEMP.: -30°C TO +80°C.
 ELECTRICAL LIFE: 200,000 CYCLES.
 RATING: 50mA, 12VDC.
 VIBRATION RESISTANCE: PASSES METHOD 201A
 MIL-STD-202F
 SHOCK RESISTANCE: 50G PER METHOD 213B
 MIL-STD-202F
 CONTACT RESISTANCE: 100mΩ MAX.
 INSULATION RESISTANCE: 100MΩ MIN. AT 100VDC.
 DIELECTRIC STRENGTH: 100VAC/1 MINUTE.
 CONTACT ARRANGEMENT: 1 POLE 1 THROW.
 MATERIALS:
 COVER: STAINLESS STEEL
 BASE: LCP HIGH-TEMP. THERMOPLASTIC.
 COLOR, WHITE.
 STEM: LCP HIGH-TEMP. THERMOPLASTIC.
 COLOR, BLACK.
 CONTACT DISK: STAINLESS STEEL
 WITH SILVER CLADDING
 TERMINAL: BRASS WITH SILVER PLATING
 TAPE & REEL PACKAGING, 2,000 PER REEL
 SOLDERING:
 HAND SOLDERING: 30 WATT IRON AT 320°C FOR 2 SECONDS
 IR REFLOW: 240°C MAX
 ROHS COMPLIANT
 LEAD FREE PROCESS COMPATIBLE



0A. INSPECT: DESIGNS ARE CRITICAL DIMENSION TOLERANCES (UNLESS AS NOTED) .XX = ±.02 [0.5] .XXX = ±.008 [0.20] .XXXX = ±.0008 [0.02] ANGLE = 30.5°		63 Neck Rd. Hendersonville, NC 27535 Phone: 704-372-3554 Fax: 704-372-3554		DRN. CJD BR. PJD
TITLE TACT SWITCH	SHEET 1 OF 1	SIZE B	SCALE 15:1	THIRD ANGLE PROJECTION
DO NOT SCALE DRAWING NO. AMPTLP2VTR	DATE 01/23/06	REV B		

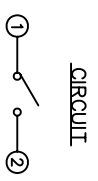
THIS DOCUMENT IS THE PROPERTY OF APDM COMPONENTS AND SHALL NOT BE COPIED, REPRODUCED, DISCLOSED OR SALE WITHOUT PERMISSION OF A DULY AUTHORIZED REPRESENTATIVE OF APDM COMPONENTS INC.

P.C.B. LAYOUT



HATCHED AREA SHOWS SOLDERING LAND

DESCRIPTION: VERTICAL PUSH MECHANICAL CONTACT SWITCH.
 SPECIFICATIONS:
 OPERATION FORCE: 160± 50gf
 OPERATION TEMP.: -25°C TO +70°C.
 STORAGE TEMP.: -30°C TO +80°C.
 ELECTRICAL LIFE: 200,000 CYCLES.
 RATING: 50mA, 12VDC.
 VIBRATION RESISTANCE: PASSES METHOD 201A
 MIL-STD-202F
 SHOCK RESISTANCE: 50G PER METHOD 213B
 MIL-STD-202F
 CONTACT RESISTANCE: 100mΩ MAX.
 INSULATION RESISTANCE: 100MΩ MIN. AT 100VDC.
 DIELECTRIC STRENGTH: 100VAC/1 MINUTE.
 CONTACT ARRANGEMENT: 1 POLE 1 THROW.
 MATERIALS:
 COVER: STAINLESS STEEL
 BASE: LCP HIGH-TEMP. THERMOPLASTIC.
 COLOR, WHITE.
 STEM: LCP HIGH-TEMP. THERMOPLASTIC.
 COLOR, BLACK.
 CONTACT DISK: STAINLESS STEEL WITH SILVER CLADDING
 TERMINAL: BRASS WITH SILVER PLATING
 TAPE: TEFLON.
 TAPE & REEL PACKAGING, 2,000 PER REEL
 SOLDERING:
 HAND SOLDERING: 30 WATT IRON AT 320°C FOR 2 SECONDS
 IR REFLOW: 260°C MAX
 RoHS COMPLIANT
 LEAD FREE PROCESS COMPATIBLE



CIRCUIT

DATE	SYM	REVISION RECORD	DWN.	CK.
5/08	B	ECO# 778	CD	PD

Q.A. INSPECT:		DESIGNATES CRITICAL DIMENSION		TOLERANCES (UNLESS OTHERWISE SPECIFIED)		ANGLE = 40.5°	
APDM		63 Neck Rd. 01835		1000 = ±.0008 [0.002]		DRW. CJD	
TITLE		SHEET		SCALE		THIRD ANGLE PROJECTION	
TACT SWITCH		1 OF 1		15:1		PJD	
DATE		DRAWING NO.		REV			
01/23/06		AMPTFP2VTR		B			

1 2 3 4 5 6 7 8